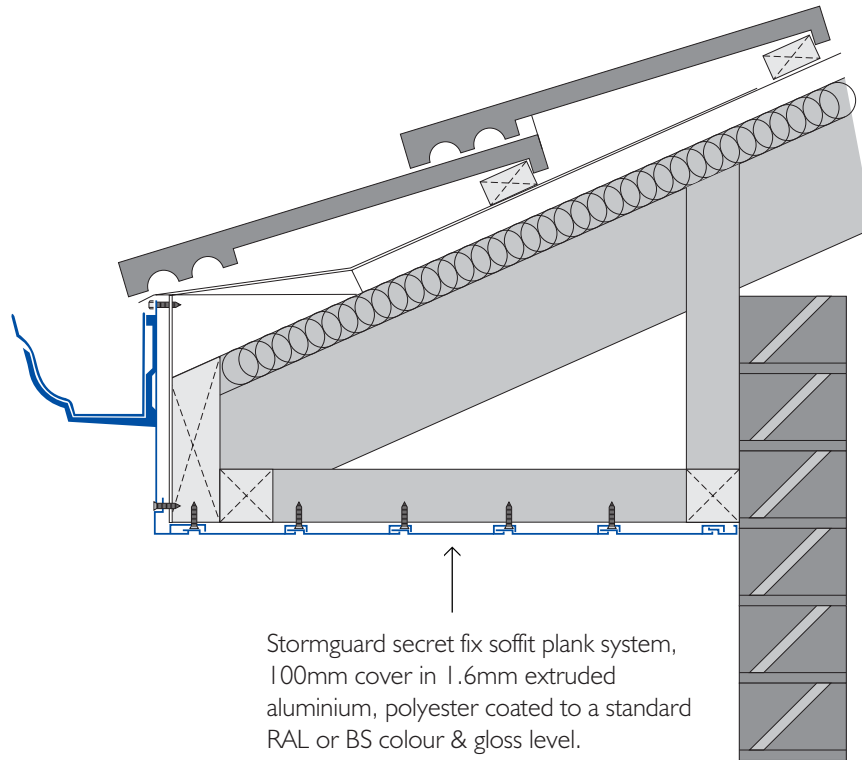


# Fascia/Soffit Systems

'Eclipse' Fascia and Soffit systems are designed to incorporate a professionally finished, aesthetic appearance with very low maintenance and high vandal resistant features. This is achieved by a combination of secret fixings, heavy gauge aluminium extrusions and

pressings, polyester powder coated to BS 6496. Added to the inherent architectural features is the suitability for exposed situations where high wind loadings can be encountered, e.g. airports, coastal areas and high buildings.



The above example shows an exposed gutter; in instances where the gutter is not required as a feature, the soffit can be extended to allow the fascia to enclose the gutter.

# Fascia/Soffit Systems

'Eclipse' Soffit systems are suitable for both internal and external applications with two standard widths giving three effective widths of 90mm, 100mm and 125mm. The 125mm wide plank is designed to give a tongue and groove effect whilst the 100mm wide plank can give

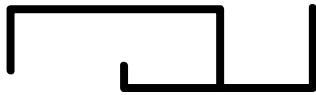
either a butt joint finish at 90mm wide or a delicate shadowline at 10mm wide. There is also a full range of trims and sections available to suit almost any application, some of which are detailed below.



100 mm wide

The above 100mm wide extrusion combined with trims illustrated below act as ideal architectural features in vertical/sloping conditions both internally and externally.

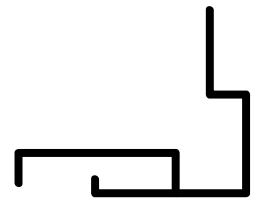
As an additional feature the eaves and cladding systems are available in the full range of anodised colours including gold, silver and bronze.



Starter Trim



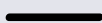
Closing Trim



Corner Section



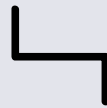
Facia/Soffits are available in folds shown below, in any girth from 50mm - 1500mm



0 Folds



1 Folds



2 Folds



3 Folds



4 Folds